

Stable Suite



Meetings,  
Retreats  
& Exclusive Use

Discover more at [Whatley](#)





## Business at its most pleasurable

Whatley Manor is an inspiring environment for board and business meetings that break from the norm. Discreetly tucked away from the hustle and bustle but easily accessible from the M4, our location is miles away from distractions and offers a breath of fresh air for your team.

The Stable Suite is fully self-contained and features a boardroom, three gallery breakout rooms, cinema, courtyard garden and a pantry stocked with essential refreshments.

Twenty three bedrooms, spa and gym, three dining options and twelve acres of grounds complete the offering. Whatley Manor is a place where business and pleasure blend seamlessly together.

Whatley Manor is a place where business and pleasure blend seamlessly together.



**Our Stable Suite consists of five distinct yet seamlessly linked spaces.**

**The Reception:** Perfect for registering your guests on arrival and an ideal location for an energy-boosting breakfast.

**The Gallery:** Consisting of three rooms that can be divided or left as one long room, lending itself naturally as a breakout or networking space.

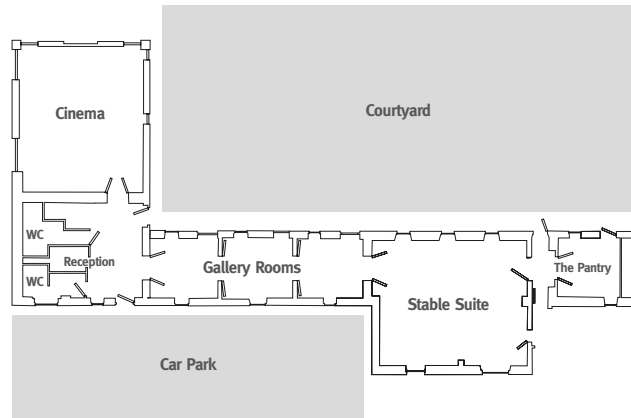
**The Boardroom:** Ideal for meetings as it has plenty of natural daylight and overlooks the courtyard. Facilities include an in-built Wi-Fi enabled 65” LED 4k plasma screen, Apple TV, teleconferencing & stationery.

**The Cinema:** Wonderfully luxurious, the cinema is guaranteed to add the WOW factor to any presentation. The room includes a 7ft wide screen, high definition projector with HDMI & wireless connectivity, Blu-ray player & 5.1 Digital Surround Sound System.

**The Courtyard:** The enclosed stable courtyard allows delegates to enjoy lunch al fresco and is perfect for a reception or networking event.

The Stable Suite is available to hire daily from £500 and includes access to designated, secure, superfast fibre WiFi.

| Room          | Numbers  | Size                                   |
|---------------|--|--|
| Gallery Rooms | 60 Standing<br>3 x 10 breakout                   | 15 metres Sq each                      |
| Boardroom     | 24 Boardroom<br>60 Theatre<br>32 Classroom       | 72 metres Sq<br>L 9.3m, W 7.5m, H 2.4m |
| Cinema        | 40 Seated  | 62.4 metres Sq, L 8.8m, W 7.1m         |
| Courtyard     | 80 Standing<br>60 Theatre<br>(weather dependant) | 270 metres Sq, L 27m, W 10m            |





### Fine Private Dining

With two individual private places to dine, the decision is yours. Our Executive Chef Ricki Weston has created contemporary and innovative dishes that burst with flavour. Ricki's menus reflect the setting of your dining experience.

**The Green Room** – A social and stylish atmosphere that is perfect for events that encourage conversation, foodie adventures and good times. This elegant and social space is exclusively yours for up to 24 guests.

**The Garden Room** – Situated within the main house where you can enjoy arrival drinks next to the fireplace or outside on the fountain terrace. Choose from carefully crafted seasonal menus served to 20 guests on one large oval table or 30 guests on three rounds.

**The Green Room & Garden Room are available to hire for lunch or dinner from £350. Hire includes personalised headed menus, a table plan and individual place cards.**

### Exclusive Use

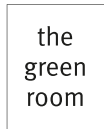
For complete flexibility, exclusive use at Whatley Manor hands you the keys to the manor house for an event that will inspire and impress your guests. Whether you're looking to host clients with a lavish dinner and champagne reception or launch a new product to stakeholders, you'll find everything you need to seamlessly blend business with pleasure.

### Finding Us

- Located in the South West of England.
- Situated just 10 minutes off the M4, J17 and under 2 hours from central London.
- Perfect for exploring the Cotswolds, Bath & our royal neighbours home, Highgrove.
- Helicopters are welcome to land at Whatley Manor with prior notice.
- Cotswold Airport (18km) caters for the landing of private jets and helicopters. Bristol Airport (51km) and Heathrow Airport (140km) are both under 2 hours away.
- Direct trains from London to Chippenham, 1hr 15 mins.  
With Transfers from Chippenham only 25 minutes.

Easton Grey, Malmesbury, Wiltshire, SN16 0RB • [events@whatleymanor.com](mailto:events@whatleymanor.com) • 01666 834 026 • [whatleymanor.com](http://whatleymanor.com)

[@Whatley\\_Manor](https://twitter.com/Whatley_Manor) [@whatleymanor](https://www.instagram.com/whatleymanor) [@whatleymanor](https://www.facebook.com/whatleymanor)



at whatley manor